

Specifications

Data Acquisition

JE-921A electrode junction box	
Number of input jacks	EEG: 25, Extra: 4, Bipolar (pairs): 7, DC: 4, SpO ₂ connector: 1, ETCO ₂ connector: 1
Input impedance	EEG input/extra input: 100 MΩ
Internal noise level	EEG input/extra input: 1.5 μVp-p or less (0.53 to 60 Hz)
CMRR	EEG input/extra input: 105 dB or greater (60 Hz)
A/D conversion	16 bits
Sampling frequency	100, 200, 500, 1000 Hz, selectable

Data Processing

Sensitivity	EEG INPUT: OFF, 1 to 200 μV/mm
Time constant	0.001 to 10.0 s
AC filter	50 or 60 Hz

Display

Display size	17 inches
Display type	Touch panel
Display resolution	Up to 1280 dots × 1024 lines
Number of display channels	Up to 64 and one mark channel

Filing

Data storage	Built-in hard disk drive
--------------	--------------------------

Safety

Type of protection against electric shock: Class I
Degree of protection against electric shock: Type BF applied part

Power Requirements

AC 100 to 240 V (50/60 Hz), 400 VA or less

Dimensions and Weight

CC-125A PC unit	460 (W) × 385 (H) × 97 (D) mm, 8.5 kg
JE-921A electrode junction box	185 (W) × 72 (D) × 167 (H) mm, 1.0 kg
KC-125A cart	756 (W) × 1000 to 1600 (H) × 700 (D) mm, 30.0 kg

System Composition

- CC-125A PC unit
- JE-921A electrode junction box
- KC-125A cart

Options

- Trend program, QP-160A
- Mini electrode junction box, JE-922A
- Camera capture unit, QI-120A
- Digital video software, QP-110AK
- Cart, KC-125A

Electrodes and Sensors

- ECG clip-on limb electrode, Fastclip [H068A]
- ECG electrode lead, BC-112B [K512A]
- EEG disk electrode (shielded type), BE-911A, 24 electrode leads
- EEG disk electrode (shielded type), BE-912A, 12 electrode leads



SpO₂ adapter, JL-550T2 [Y095A]



CO₂ sensor kit, TG-921T3 [P908]



SpO₂ probe (for neonate/adult, disposable), TL-273T [P203C]



Multi-site Y probe, TL-260T [P205A]

Related Product



Electroencephalograph EEG-1200J/K

Related Literature



The aEEG Booklet

Neurofax

Electroencephalograph
EEG-1250

Save lives with aEEG monitoring in the ICU/NICU



Neuroworkbench is a registered trademark of Nihon Kohden Corporation.
This brochure may be revised or replaced by Nihon Kohden at any time without notice.

 **NIHON KOHDEN**

NIHON KOHDEN CORPORATION
1-31-4 Nishiochiai, Shinjuku-ku, Tokyo 161-8560, Japan
Phone +81 (3) 5996-8036 Fax +81 (3) 5996-8100
www.nihonkohden.com

EEG monitoring in the ICU/NICU

The space-saving EEG-1250 provides continuous EEG monitoring in the ICU/NICU for critical patients.

The optional EEG trend program (aEEG) allows even non-neurologists to recognize at a glance abnormal brain function such as brain seizures which cannot be detected in the vital sign data of HR, SpO₂ and CO₂.

EEG monitoring in the ICU/NICU enables more timely life-saving treatment.

Vital sign data plus EEG on one screen

The JE-921A junction box has an SpO₂/CO₂ connector and accepts analog input signals from a patient monitor. This lets you monitor EEG and vital sign data together on the same screen.

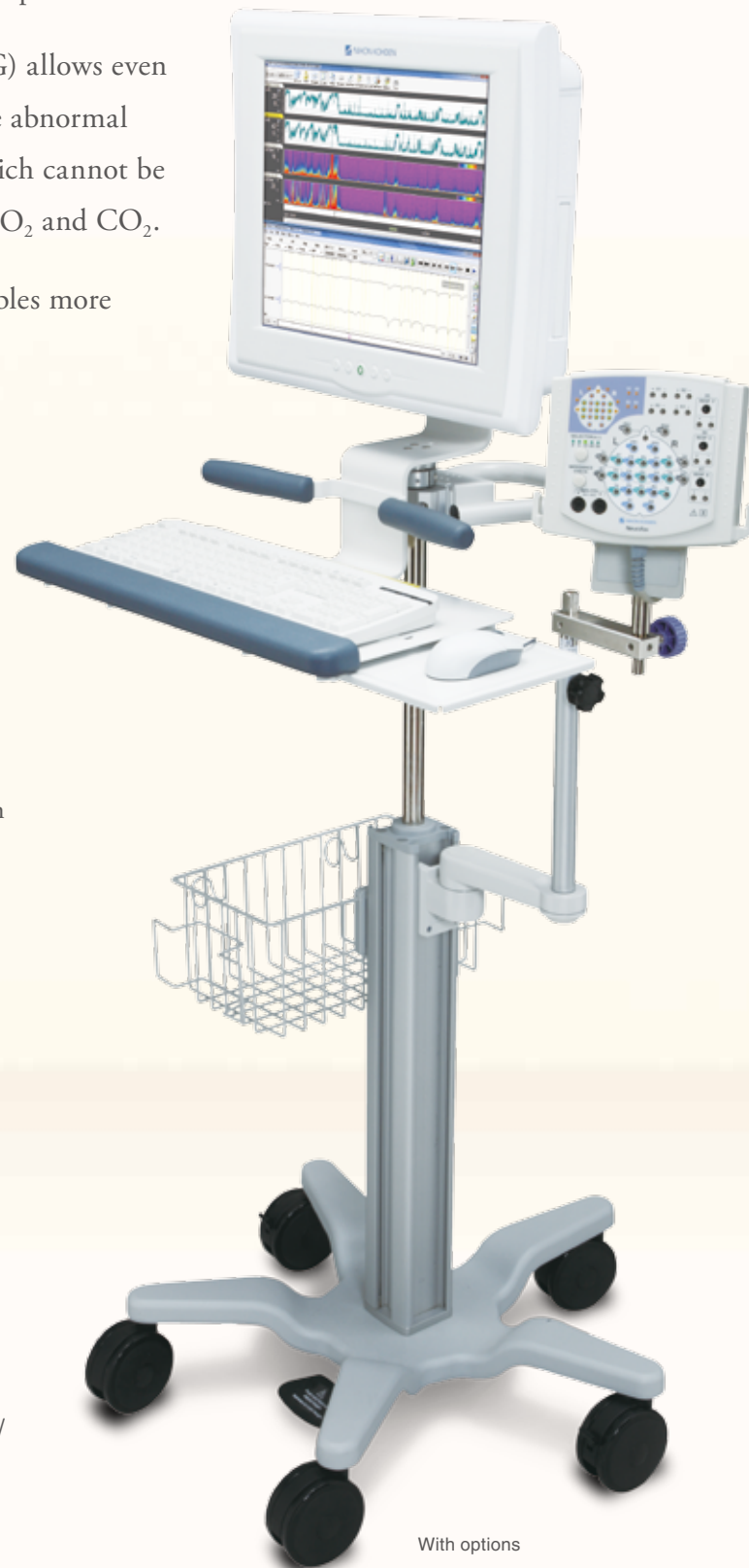
Easy to use

The large 17-inch touch panel provides intuitive operation. The height of the cart can also be adjusted for best angle monitoring. The stylish design fits in the limited space in an ICU/NICU.

Remote monitoring with Neuroworkbench®

The Neuroworkbench® data management software provides remote monitoring function. This helps ICU/NICU doctors because the ICU/NICU doctors cannot always diagnose EEG waveforms and the neurologist is not always present in the ICU/NICU.

Remote monitoring lets the neurologist diagnose the EEG from another part of the hospital.

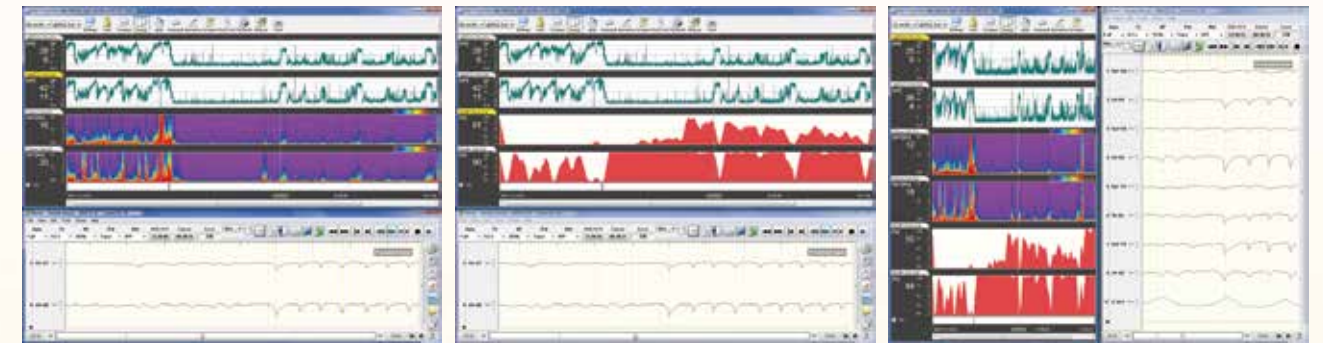


With options

aEEG

Quantitative analysis such as aEEG, DSA and burst suppression reveals trends in EEG waveforms.

With optional trend program, QP-160A



aEEG, DSA and waveforms

aEEG, burst suppression and waveforms

Tile

Synchronized digital video

You can record, save and review patient images synchronized with the EEG waveforms. This is useful for diagnosis when the patient has a seizure. Video clip and snapshot function are available.

(requires optional QP-110AK digital video software and QI-120A camera capture unit)



Shielded electrodes

The shielded BE-911A/912A EEG electrode cable (option) reduces noise and improves stable EEG monitoring.



Mini junction box

The JE-922A mini junction box (option) can be extended up to 5 m from the main junction box.



All-in-one junction box

The 10-20 system JE-921A junction box integrates 32 channel EEG input and provides the highest signal quality and maximum reliability. It also provides SpO₂/ETCO₂ inputs and 4 channels DC input.

